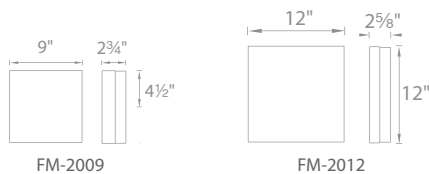
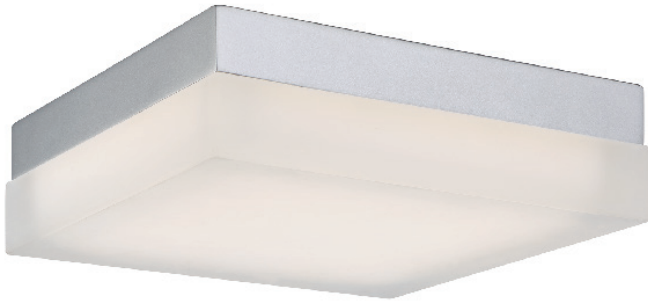


MATRIX – model: FM-20

LED Interior Flush Mount

MODERN FORMS



Fixture Type:

Catalog Number:

Project: _____

Location: _____

PRODUCT DESCRIPTION

Designed and crafted with clean square geometric styling, this sleek and simple ceiling luminaire blends with any residential or commercial setting. Optimal LED illumination delivers uniform bright lighting in nearly any room. Smooth thick wall etched glass is complemented with a stunning new Titanium finish.

FEATURES

- Illuminates evenly without hotspots or shadowing
- Wall or ceiling flush mount
- ETL & cETL wet location listed, IP44 rated
- Also rated for use in closets
- FM-2012 is CEC Title 24 compliant
- Dimming with electronic low voltage (ELV) dimmer
- Transformer located in outlet box
- Replaceable LED module
- 277V option available (special order)
- 50,000 hour rated life
- Color Temp: 3000K
- CRI: 90

ORDER NUMBER

	Wattage	Voltage	LED Lumens	Delivered Lumens	Finish
FM-2009-30*	9"	32W	2380	1511	TT <i>Titanium</i>
FM-2012-30	12"	27W	2555	1015	BK <i>Black</i>

Example: **FM-2009-30-TT**

*For 277V special order, add an "F" before the color temperature: **FM-2009F-30-TT**

For 2700K add "-27"; 3500K add "-35" before the finish: **FM-2009-27-TT**

SPECIFICATIONS

Construction: Aluminum construction with mouth blown etched opal glass.

Light Source: High output LED.

Finish: Titanium (TT).

Standards: ETL & cETL damp location listed. IP 44 rated. ADA compliant. CEC Title 24 for FM-2012. Energy Star® rated.

REPLACEMENT GLASS

Part#	Fixture
RPL-GLA-4012	<i>FM-2012</i>
RPL-GLA-4009	<i>FM-2009</i>

modernforms.com
Phone (800) 526.2588
Fax (800) 526.2585

Headquarters/Eastern Distribution Center
44 Harbor Park Drive
Port Washington, NY 11050

Central Distribution Center
1600 Distribution Ct
Lithia Springs, GA 30122

Western Distribution Center
1750 Archibald Avenue
Ontario, CA 91760