



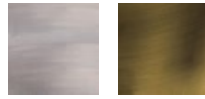
Project: \_\_\_\_\_

Location: \_\_\_\_\_

Fixture Type: \_\_\_\_\_

Catalog Number: \_\_\_\_\_

**AVAILABLE FINISHES:**



## Taffeta

WS-92518

**PRODUCT DESCRIPTION**

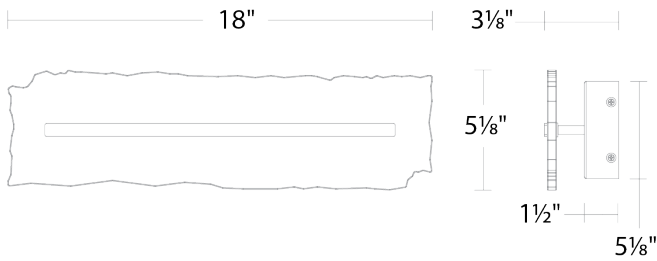
Ruffled transparent live-edge alabaster adds multi-faceted elegance to the Taffeta wall sconce. A meticulously crafted alabaster panel is secured by a sleek bar, allowing diffused 3000K LED light to filter through the translucent stone, creating a warm and inviting ambiance. This luminaire can be mounted horizontally or vertically to suit your space.

**FEATURES**

- Driver concealed within the canopy
- Ambient illumination
- First class quality Spanish alabaster. Natural alabaster with unique veining in each crafted piece
- Raw edge alabaster is characterized by varying contours

**SPECIFICATIONS**

<b>Rated Life</b>	50,000 Hours
<b>Standards</b>	ETL, cETL, Damp Location Listed
<b>Input</b>	120-277 VAC, 50/60Hz
<b>Dimming</b>	ELV: 100-5%, TRIAC: 100-5%
<b>Mounting</b>	Can be mounted on wall in all orientations
<b>Color Temp</b>	3000K
<b>CRI</b>	90
<b>Construction</b>	Aluminum frame with alabaster diffuser



WS-92518

Model & Size	Color Temp	Finish	LED Watts	LED Lumens	Delivered Lumens
WS-92518 18"	3000K	AB Aged Brass	27.8W	2000	1634
	3000K	AN Antique Nickel	27.8W	2000	1634

Example: **WS-92518-AN**

For custom requests please contact [customs@modernforms.com](mailto:customs@modernforms.com)

\* WAC Home components required for tunable white or Dim-to-Warm mode. See WAC Home section on website for additional information or use QR code on the right

