

# INSTALLATION INSTRUCTIONS

## LED Wall Sconce

WS-52420/WS-52427/WS-52434

# MODERN FORMS®

**CAUTION:** To prevent electrical shock, ensure electricity has been turned off at the circuit breaker before beginning.

- Read all instructions before installing.
- System is intended for installation by a licensed electrician in accordance with the National Electrical Code (NEC) and local regulations.
- When handling the fixture, do not apply pressure to the LEDs. Hold the fixture by the base only.
- Retain installation instructions for future maintenance reference.

**WARNING:** All parts must be used as indicated in these instructions. This product is designed for use only with the supplied parts and/or accessories designated for use by Modern Forms. Substitution of parts or accessories not designated for use with this product by Modern Forms could result in personal injury or property damage, and will void the warranty. Contact an authorized dealer or the manufacturer if any parts are damaged or missing.

**MAINTENANCE NOTE:** Coastal conditions may cause mineral and residue build-up on the fixture. We recommend that customers in coastal areas clean all external surfaces of the fixture once every two weeks with a wet cloth.

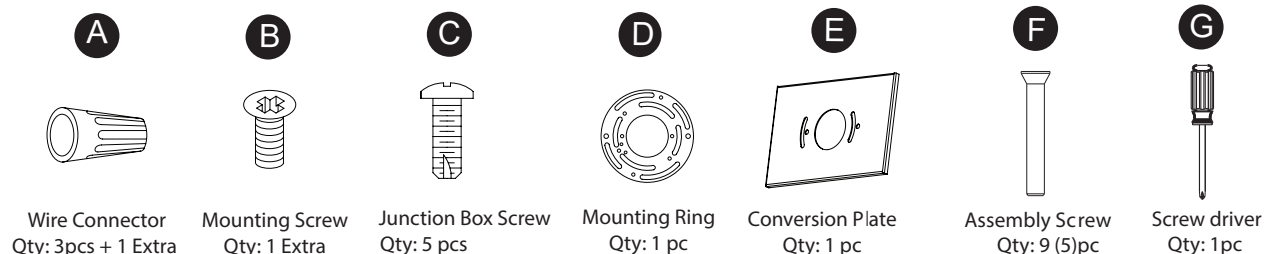
**MISE EN GARDE:** Pour éviter tout choc électrique, assurez-vous que le disjoncteur soit mis hors tension avant de commencer.

- Lisez toutes les instructions avant l'installation.
- Le système doit être installé par un électricien licencié conformément au code national de l'électricité (NEC), et également aux règlements locaux.
- Lors de la manipulation du luminaire, n'appuyez pas sur les LED. Tenez-le uniquement par la base.

**ATTENTION:** Toutes les pièces doivent être utilisées comme indiqué dans ces instructions. Ce produit est conçu pour être utilisé seulement avec les pièces et/ou accessoires fournis pour être utilisés avec les produits Modern Forms. Remplacer des pièces ou accessoires non conçus pour ce produit Modern Forms pourrait causer des dommages corporels ou matériels et pourrait également causer l'annulation de la garantie. Veuillez contacter un revendeur autorisé ou le fabricant si des pièces manquent ou sont endommagées.

**NOTE D'ENTRETIEN:** Les conditions côtières peut causer une accumulation de minéraux et de résidus sur le luminaire. Nous recommandons aux clients qui résident dans les zones côtières de nettoyer toutes les surfaces externes du luminaire une fois toutes les deux semaines avec un chiffon humide.

## HARDWARE



ModernForms.com

Phone (866) 810.6615

Fax (800) 526.2585

Headquarters, East Manufacturing Facility

44 Harbor Park Drive

Port Washington, NY 11050

South East Manufacturing Facility

1600 Distribution Ct

Lithia Springs, GA 30122

Central Manufacturing Facility

1700 South J Elmer Freeway, Ste 100

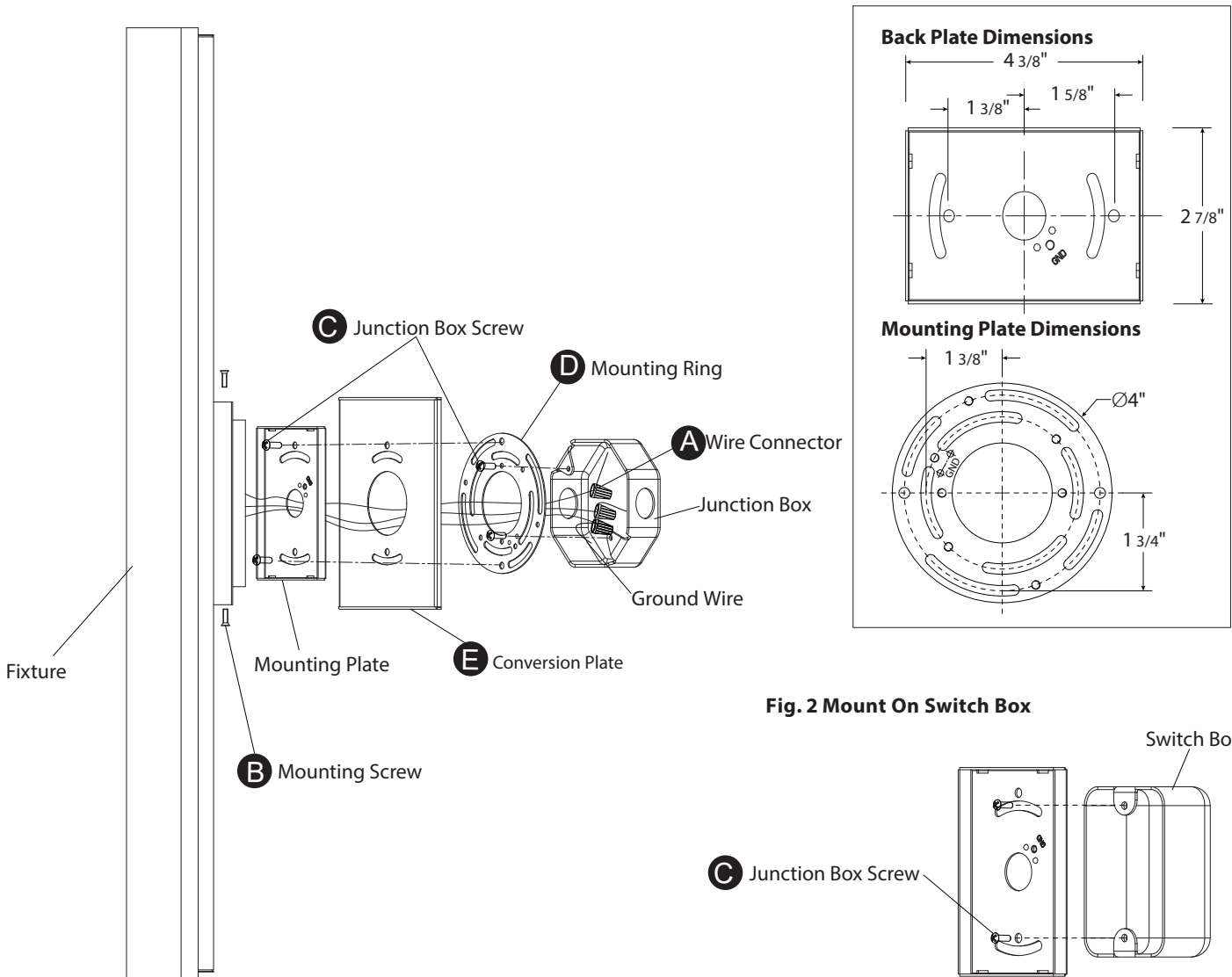
Cedar Hill, TX 75104

West Manufacturing Facility

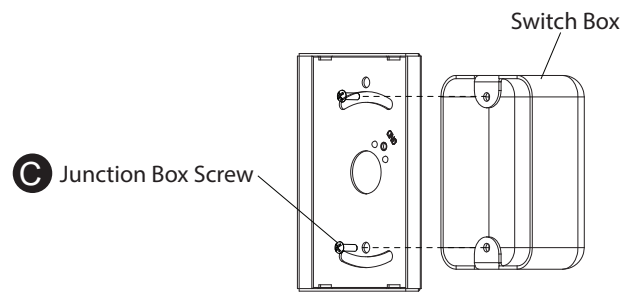
1700 S Archibald Ave

Ontario, CA 91761

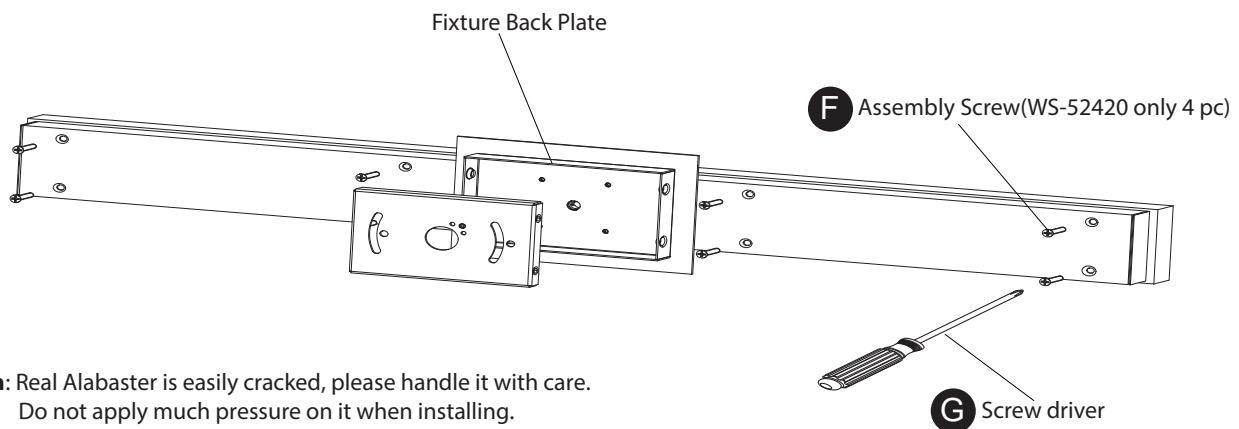
**Fig. 1 Mount On Junction Box**



**Fig. 2 Mount On Switch Box**



**Fig. 3**



**Attention:** Real Alabaster is easily cracked, please handle it with care.  
 Do not apply much pressure on it when installing.

**PREPARATION**

1. Shut off the power at the circuit breaker and remove existing fixture, including the crossbar.
2. Carefully unpack your new fixture and lay out all the parts on a clear area. Be careful not to lose any small parts necessary for installation.

**INSTALLATION**

**MOUNT ON JUNCTION BOX (Fig.1& Fig.3)**

3. Remove the mounting screw (B) from the fixture as shown in Fig.1.
4. Use assembly screw (F) to secure the alabaster to the lamp body, turning the screws clockwise to make sure they are tight (Fig.3).
5. Connect the fixture wire to junction box wires as shown in Fig.4 making sure that all wire connectors (A) are secured.
6. Secure the mounting ring to the junction box using the junction box screws (C). The side of the mounting ring marked "GND" must face out.
7. If your outlet box has a green or bare copper ground wire, connect the fixture's ground wire to it. Otherwise, connect the fixture's ground wire directly to the back plate using the green screw provided. After wires are connected, tuck them carefully inside the junction box.
8. Secure the mounting plate and conversion plate (E) to the mounting ring with junction box screw (C).
9. Place the fixture over the mounting plate, and secure it with mounting screws (B).

**OR**

**MOUNT ON SWITCH BOX (Fig.2& Fig.3)**

3. Remove the mounting screws (B) from the fixture.
4. Use assembly screw (F) to secure the alabaster to the lamp body, turning the screws clockwise to make sure they are tight (Fig.3).
5. Connect the fixture wire to switch box wires as shown in Fig. 4 making sure that all wire connectors (A) are secured.
6. Secure the mounting plate to the switch box using the junction box screw (C). The side of the mounting plate marked "GND" must face out.
7. If your outlet box has a green or bare copper ground wire, connect the fixture's ground wire to it. Otherwise, connect the fixture's ground wire directly to the back plate using the green screw provided. After wires are connected, tuck them carefully inside the switch box.
8. Place the fixture over the mounting plate, and secure it with mounting screws (B).

**Fig. 4 Wiring**

